

WINGS PROGRAM, INC.
P.O. BOX 95615
PALATINE, IL 60095
PHONE: 847-519-7820
24-HOUR CRISIS LINE: 847-221-5680
WWW.WINGSPROGRAM.COM



2014

ANNUAL REPORT

"There is nothing like a dream to create the future." - Victor Hugo



A Message from the CEO

Dear Friends of WINGS,



I am thrilled to report that WINGS experienced another year of tremendous growth in expanding the services we provide to families escaping domestic violence situations. Our Community-based services have grown with additional offices throughout the community to provide greater convenience and access. As a result, WINGS provided close to 4,000 hours of counseling and support to over 300 individuals this past year. Additionally, the Safe House expanded to its full capacity of providing shelter to 45 women and children per night. Taking women and children from all over the Chicago region and beyond, they were able to increase the number of families served by 17% percent.

Over the last year, WINGS also re-established the Children's Services program, which had been lost during the recession due to funding constraints. Now, there are dedicated staff who work directly with the children to address their emotional and behavioral reactions to the abuse they witnessed in their homes. This service will insure that we break the cycle of violence and raise a generation that will enjoy healthier relationships.

Along with all of these changes, we worked extensively on our new facility, WINGS Metro, the first new domestic violence shelter in the city of Chicago in over a decade. Our partner, Greater Southwest Development Corporation, is handling the construction while WINGS is busy raising sufficient funds to pay for the capital and operations. The state-of-the-art facility will serve 40 women and children each night, and will also include three apartments for those families needing additional time to recover from their trauma.

As you read through all of the exciting things that have happened at WINGS over the last year, please know that it would not be possible without all of the support we receive from the community. WINGS continues to operate all of our programs and services with less than 20% coming from government sources. We truly rely on you!

We cannot thank you enough for making it possible for us to give flight to hopes and dreams!

Sincerely,

A handwritten signature in cursive script that reads "Rebecca A. Darr".

Rebecca A. Darr

Chief Executive Officer



The Power to Succeed

A Mother's Strength "Love the whole world as a mother
loves her only child."
- Buddha (563 - 483 B.C.)"

Maria Recososa, WINGS 2013 David K. Hill Award Winner, epitomizes what a Mother will do to give her children a better life.

Maria's situation reached a new level of hopelessness when she found herself and her two daughters sleeping on the floor of a foreclosed property with only a comforter to share.

Her husband had walked out after choking her, leaving her with a two month old daughter who was born with fluid on the brain and an older child with special needs.

Although exiled in a place without running water or electricity, Maria made sure that her older daughter continued to attend school and receive the services she needed. It was at that school that Maria heard about WINGS from a social worker. After 21 days of staying in the foreclosed property Maria called our 24-hour Hotline and was told that WINGS had an opening for her and her children in our Transitional Housing Program.

While residing in Transitional Housing, Maria took advantage of every opportunity given to her. She attended every meeting with her Family Advocate and every program that WINGS offered: counseling, parenting classes, children's services, Money Management, family excursions, support groups, safety planning and legal support and advocacy. And she did it all with her children using public transportation since she does not own a car.

Maria is a strong advocate for her children utilizing every service that is available through the school system, Maine Township, and WINGS. She has attained each goal she set for herself and amazed all who have worked with her.

David Hill's legacy of hope and renewal shine every day through Maria Recososa.



Maria Recososa after her stay at WINGS



Maria and her daughters having fun at a WINGS Outing

Annually, WINGS serves many more children than women.

On The WINGS of Angels: In Memorium

WINGS lost two wonderful angels within weeks of each other this past winter who are sorely missed for their leadership, energy, enthusiasm, and love of life.

Jean McCabe (1928- 2014)

Jean McCabe, and her husband, Ed, life-long residents of Park Ridge, came into our lives over 20 years ago when they made the extraordinary donation of a foreclosed home they purchased for WINGS women and children. At the same time, Jean joined the Board of Directors and helped to guide the organization until her death.

It seems everyone in Park Ridge knew Jean because she was so devoted to her community. Her lifetime of service was devoted not only to WINGS, but also to Girl Scouts, Park Ridge Community Fund, her parish, Mary Seat of Wisdom, the Kalo Foundation, Park Ridge Youth Campus, and a variety of other causes. Jean was known for her exuberance, winning smile, kindness, and spirit along with her commitment to historic preservation, and love of family, bridge and cooking.

Jean was married to her beloved Ed for 63 years; they raised 4 children, and worked together in real estate.

WINGS still has the home that Jean and Ed donated some twenty years ago, now lovingly called The McCabe House. Hundreds of women and children have called it home over the years and have made better lives for themselves because of Jean and Ed's kindness.



Jean and Ed McCabe

Debbie Luna Walsh (1958-2014)

was an accomplished accounting professional for more than 30 years. She was analytical, detail oriented, and a problem solver. She was skilled at board and fund development, diplomatic, and managed multiple projects at any given time. Deb was also clear, calm, had great insight, and was compassionate and full of love. All of these wonderful traits served Deb well in both the business arena and her personal life where she utilized them as a wife, daughter, sister, aunt and cousin.

Deb was a member of WINGS Board of Directors for 15 years. In her capacity as a board member, committee member, Vice President and President of the Board, Deb was instrumental in the growth of WINGS and spearheaded our efforts to streamline processes and be more efficient. She helped develop assessments of our special events and began the process of program evaluation and outcome measurements.

Debbie was diagnosed with Stage 4 colon cancer in June 2012. Since that time she underwent several surgeries and chemotherapy to combat her cancer. Through it all she kept a positive attitude and had a smile on her face as she continued with her regular life. She traveled, attended concerts and family gatherings and always expected to beat the disease. We all thought she would, too, but unfortunately it was not to be. We said goodbye to our beautiful friend last winter, an amazing woman who touched many lives and who will be deeply missed.



Debbie Luna Walsh

WINGS Programs

WINGS founding members made a commitment nearly 30 years ago to help homeless and abused women and children find a better life and we have never swayed from our mission.

Through the course of the years we have expanded our services to address the new and changing needs of our population but we have held fast to our promise of meeting the unique needs of each family member in a compassionate and respectful manner.



WINGS Housing offers a variety of options to fit the needs of each family.

Safe House

WINGS Safe House provides emergency shelter for women and children who are fleeing the devastating effects of domestic violence. The secure, home-like environment allows single women and women with children to live in safety and comfort while they determine the next steps of their lives. Families stay for up to 6 weeks in the Safe House.

Transitional

No-cost *shared living* homes are available for unemployed women and their children while mom seeks employment. *Apartments* scattered throughout the north and northwest suburbs provide employed women with the opportunity to live on their own while paying 30% of their adjusted gross income toward rent. Supportive Services for Safe House and Transitional residents include budget planning, counseling, children & family services, support groups, crisis management, goal setting, and access to vocational counseling.

Permanent Supportive Housing offers shelter and optional services to women with physical and mental disabilities, the most common of which is post-traumatic stress disorder.

Individualized Transitional Housing provides homeless victims of domestic violence with a fresh start through rental assistance, services and income increasing opportunities.

Neighborhood Stabilization Program provides low-cost housing in revitalized neighborhoods to individuals whose incomes are at or below 120% of the area median income.

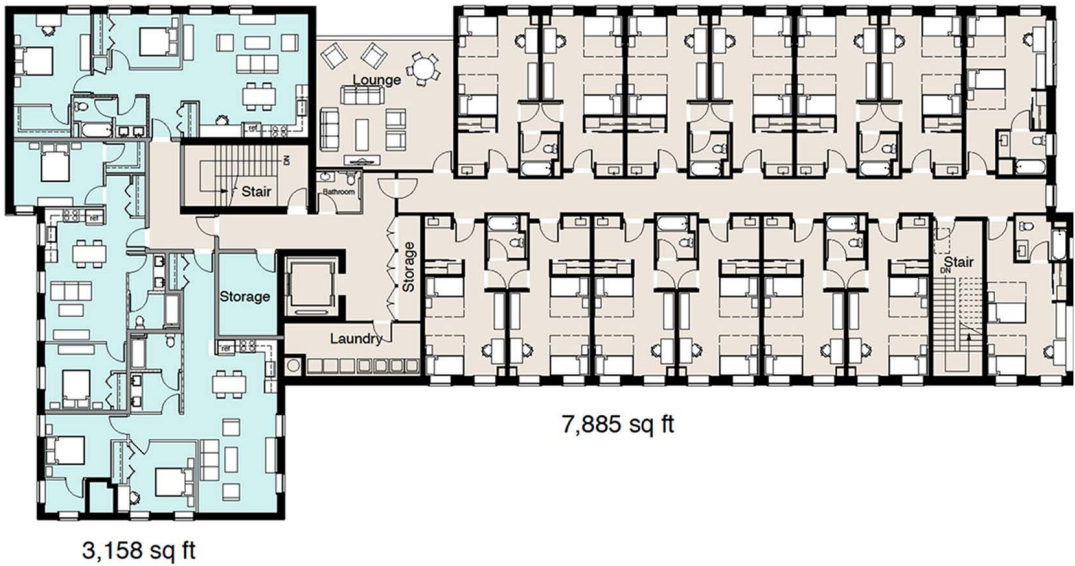
Community Based Services

WINGS Community Based Services for victims of domestic violence are provided in various non-residential locations to enhance access to vital support. Services may include counseling, and support groups pertaining to financial empowerment, legal support, advocacy, education and information about domestic violence, safety planning, and mentoring. Additionally, WINGS provides training and technical assistance to interested community members and those in the human services and related fields.

In Chicago's northwest suburban 12-township area, it is estimated that 100,000 women are affected by domestic violence.

WINGS METRO - Innovative Solutions through Unique Partnerships

Recognizing the urgent need for additional services and shelter beds in Chicago, WINGS, Greater Southwest Development Corporation and Metropolitan Family Services formed a collaborative to launch WINGS Metro, the first domestic violence shelter to be built in the city in over a decade. The state-of-the-art facility, set to open in the spring of 2015, will provide interim housing for 100 people per year, include 3 apartments for extended living and retail space to help offset costs. The collective support services provided by the three organizations will mean not only immediate safe housing and family assistance, but also employment, financial and housing counseling, legal and therapeutic services, court advocacy, support groups, early childhood education and childcare, youth development and after school programs.



"This new facility is more than a place for shelter; it's an opportunity for a chance at a new life for victims and their families. This will allow victims and their families to heal. The City of Chicago will continue to work toward increasing access to resources and fostering future opportunities for families who have been affected by domestic violence."

Rahm Emanuel, Mayor, City of Chicago

The Chicago Police Department receives an average of 500 domestic violence calls each day and currently has only 112 beds available to victims of domestic violence in the city!

Events

2013-2014

7th Annual Charity Golf Outing

Avid golfers and newcomers alike enjoyed a day on the course with lunch, hors d'oeuvres, drinks and auctions.

Monday, July 22, 2013
Inverness Golf Club, Inverness

1st Annual Salsa Night

Latina music, salsa lessons, dinner, dancing and raffles.

Saturday, September 7, 2013
Atlantis Banquets,
Arlington Heights

Purple Tie Ball

Elegant dinner and dancing along with silent and live auctions.

Saturday, September 28, 2013
Hyatt Regency Woodfield,
Schaumburg

Annual Meeting Luncheon

WINGS Annual 'State of Affairs'.

Tuesday, October 22, 2013
Chandler's Chop House,
Schaumburg

10th Annual Sweet Home Chicago

A 'Must See' premier family brunch.

Sunday, December 8, 2013
Four Seasons Hotel, Chicago

A Night to Remember

The reason we do what we do – fabulous dinner and dancing where we honor the courage of domestic violence victims.

Saturday, January 18, 2014
Donald E. Stephens Convention Center, Rosemont

Resale Fashion Show

Strutting our Resale Stuff – Luncheon and Showing off fashions available at WINGS Resale stores.

Sunday, March 2, 2014
Marriott Hotel, Schaumburg

Taste Takes Flight

Culinary extravaganza featuring chefs from famed suburban restaurants.

Thursday, April 3, 2014
Marriott Hotel Northwest,
Hoffman Estates

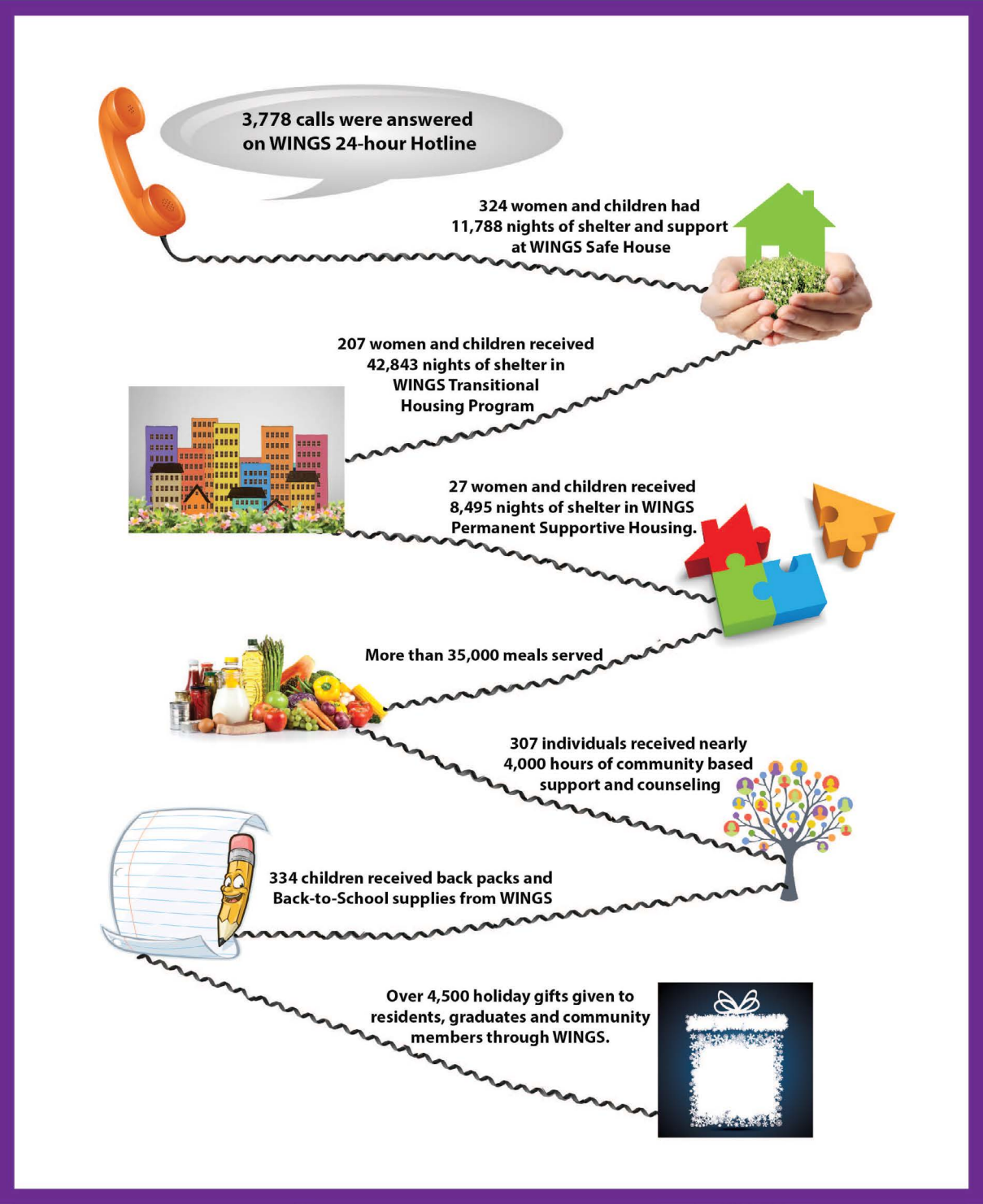
14th Annual Benefit Ride

Motorcycle odyssey through Illinois and Wisconsin culminating in lunch, music and raffles.

Sunday, June 1, 2014
JD Bootlegger's, Antioch



Program Accomplishments



July was the month with the greatest number of calls to WINGS 24-hour Hotline. August was a close second. Sixty-two percent of all calls received are a need for emergency shelter.

Building Safer Futures

Recognizing the Need...Fulfilling Dreams



WINGS has been Building Safer Futures for nearly thirty years and in that time we have provided over 500,000 nights of shelter to more than 5,000 women and children in the north and northwest suburbs of Chicago.

In the past year we have spread our wings by opening our Safe House to its full-capacity of 45 women and children a night, and by providing additional community-based services to those in desperate need.

Every 9 seconds a woman in the U.S. is assaulted or beaten.

The indirect cost of domestic violence is enormous and reaches well beyond the home with an estimated national cost of more than \$5 billion

Cook County had 50% more domestic violence homicides than any other county in Illinois.

And now with WINGS proposed expansion into the city of Chicago we will be building safer futures for thousands more women and children.

Building Safer Futures Means...

Children will not have to live in a home filled with fear, guns or drugs.

Mothers will not have to sleep with their children in a car.

The physical and emotional abuse will stop.

There is hope for a better life.

"There's no prison on earth like the four walls of a woman's home when she's battered. These women are prisoners in plain sight. They walk down the street every day and they are still prisoners."

- Vice President Joe Biden at the groundbreaking ceremony for WINGS Metro



WINGS Resale

When you give us good stuff we can do GREAT things



WINGS Resale has been an integral part of the organization since 1999 when we purchased our first store on Northwest Highway in Palatine. Our plan in opening a Resale store was to utilize all of the many donations we received for our residents, far more than they could use, and to add a revenue stream for the organization. New to the Resale business, we had several learning curves to navigate. Our first day in business we sold out of all the floor merchandise – primarily because every item in the store sold for \$1 each! We were elated until we realized that we had to re-stock for the next day’s opening.



In 2005 we opened a store in Niles, followed in 2009 with the opening of our Schaumburg store. The original flagship store in Palatine burned to the ground in June 2010. A result of that misfortune was that the entire community rallied, providing enough donations to fill a warehouse and setting the stage to open a new store several months later.

In June, 2014 WINGS sold the building housing its Schaumburg store and made the decision to invest the proceeds in a Logistics Center enabling us to track, inventory and distribute ALL donations - for resident, housing and resale needs - to the organization. Everything from the old Schaumburg store was moved to a new rented location this past fall.

Fortunately, we have been fairly fast learners when it comes to resale. Each year we receive hundreds of thousands of in-kind donations, many of which go directly to our residents and homes, and the remainder being sold at one of our three stores. Gross income from WINGS Resale operations accounts for up to a third of our gross income annually.

WINGS has found additional ways to market our Resale Stores. In 2007 we launched our first Resale Store Fashion Show to highlight the beautiful and upscale boutique items we sell. Along with the Fashion Show itself we brought our best merchandise to the event – from shoes and handbags to scarves, jewelry and accessories. Since that first show, the Boutique segment has been a favorite for our guests – last year bringing in \$12,000 in that one day alone!

“This place is hands down my favorite thrift store in the area. They’re clean, organized and have the best prices out of all their competitors.” Yelp Review by Marc C.

Schaumburg Resale Store	Palatine Resale Store	Niles Resale Store
300 W. Golf Rd.	1315 N. Rand Rd.	8349 W. Golf Rd.
847-884-7411	847-963-0861	847-965-1454

Corporate Compassion



In the past fiscal year, The Allstate Foundation has been a true ‘Helping Hand’ to WINGS by supporting our Building Safer Futures Campaign designed to increase and expand our services within the suburbs and to the city of Chicago with WINGS Metro.

A large community room at WINGS Metro is being named, “Allstate’s Helping Hands Room” to honor the foundation for its commitment to ending domestic violence. The room will provide training not only to WINGS Metro residents and its existing partners, but will also be shared with other domestic violence organizations to fulfill an unmet need of financial literacy with immigrant populations.

Capital One has been an amazing partner to WINGS in a number of ways. Monthly volunteer groups have provided needed assistance throughout the organization – from Resale to the Safe House and WINGS Housing Programs, to holding clothing and food drives, providing trainings and handmade gifts, hosting a Philanthropic Partners Fair, and sponsoring our upcoming “A Night to Remember” event.



In the summer of 2013, WINGS acquired an Administration Building in Rolling Meadows that included unfinished garage space ready for a build-out. It had long been a dream of ours to have a facility where WINGS would provide trainings, education and information to domestic violence professionals and other community members. Verizon Wireless was our Angel in Shining Armor when it provided the funding for WINGS to realize our dream and build a high-tech training institute capable of recording and broadcasting classes and events. We anticipate the Verizon Training Institute will be open and ready for use by this coming June.

The involvement of inspired and philanthropic corporations like The Allstate Foundation, Capital One and Verizon Wireless has meant that more homeless and abused women and children have clothes on their backs, food in their stomachs, a beautiful place to call home and a brighter future on the horizon. Thank you so much for making it happen.

Make a Difference and Get Involved

"The heart of a volunteer is not measured in size, but by the depth of the commitment to make a difference in the lives of others." -DeAnn Hollis

Volunteer

WINGS has a very successful track record of placing volunteers in not only the organization's highest levels of need but also in being able to match volunteers with their personal areas of interest.

If you have an interest in helping we can accommodate you. Whether you like WINGS Resale stores, special events, administrative work, answering the Crisis Line, mentoring, landscaping or facilities maintenance we will put your talents to use.

Individual Volunteers contact:

Bruna Srb, 847-519-7820 ext. 216 or
bsrb@wingsprogram.com

Group Volunteers contact:

Beth Gardham, 847-577-4668 ext. 301 or
bgardham@wingsprogram.com

Donate

Make a **contribution** at www.wingsprogram.com or send a check to P.O. Box 95615, Palatine, IL 60095

To become involved with **WINGS Metro project** contact Rebecca Darr, 847-302-8700 or rdarr@wingsprogram.com.

For **donations of stock or information about planned giving** contact Terri Channer, 847-519-7820 ext. 210 or tchanner@wingsprogram.com.

For **event sponsorships** contact Nikki Katrodia, 847-519-7820 ext. 233 or nkatrodia@wingsprogram.com



Volunteers from First Presbyterian Church of Arlington Heights help stock a WINGS food pantry and fix some bikes for WINGS kids.



Aon Volunteers did some serious weeding at the Safe House.

The Numbers

Statement of Activities for the Year Ended June 30, 2014

Revenues (unrestricted)	2014	2013
Contributions (cash and in-kind)	897,663	1,014,873
Special Events (net of direct costs)	802,824	657,445
Resale Income (net of direct expenses)	592,915	712,133
Government Contracts	969,528	917,684
Other	959,191	459,716
Total Revenue	\$4,222,121	\$3,761,851
Expenses		
Program		
Safe House	1,027,495	978,579
Transitional Living	1,287,605	1,263,078
Outreach	304,094	323,993
Permanent Supportive Housing	228,343	199,379
Administrative	488,042	455,663
Development	487,880	330,636
Total Expenses	\$3,823,459	\$3,551,328
Surplus (deficit)	\$398,662	\$210,523

▪ WINGS special events did particularly well in fiscal year 2014 thanks to increased sponsorships. Sweet Home Chicago raised an additional \$210,000. The income generated from the event is restricted to Safe House operations.

▪ "Other Revenue" includes client rent, interest, calendar and other merchandise sales, a partnership with Northwest Community Hospital, and prior-year income released from restriction.

▪ In the fiscal year ending June 30, 2014, WINGS received donated use of facilities valued at \$58,965. It also received material in-kind donations of \$110,512 and donations of gift certificates of \$19,348.

Statement of Financial Position as of June 30, 2014

Assets	2014	2013
Current Assets	4,052,533	2,905,948
Fixed Assets	4,400,212	5,858,890
Other Assets (endowment investments)	3,702,060	3,420,752
Total Assets	\$12,154,805	\$12,185,590
Liabilities & Net Assets	2014	2013
Liabilities		
Current Liabilities	328,952	471,143
Long-Term Liabilities	1,057,643	2,195,136
Total Liabilities	\$1,386,595	\$2,666,279
Net Assets		
Unrestricted Net Assets	3,656,123	3,357,461
Board Designated Reserve	175,000	75,000
Temporarily Restricted Net Assets	4,378,000	3,527,763
Permanently Restricted Net Assets	2,559,087	2,559,087
Total Net Assets	\$10,768,210	\$9,519,311
Total Liabilities & Net Assets	\$12,154,805	\$12,185,590

WINGS financial statements were audited by
Plante & Moran, PLLC.

▪ On July 3, 2014, WINGS entered into a joint venture agreement to construct and manage a mixed use building with another not-for-profit organization, Greater Southwest Development Corporation. WINGS will be a 95% owner of WINGS Metro, LLC, the new entity.

▪ On July 23, 2014 WINGS created a wholly owned subsidiary, WM Initiatives LLC, to operate a domestic violence shelter and extended stay housing in the building being constructed and managed by WINGS Metro, LLC.



According to a 2012 GuideStar Survey more than 50% of charitable organizations say they receive the majority of their contributions between October and December every year.



WINGS staff enjoyed a day outdoors with volunteers in July 2013.

Board, Staff, and Volunteers

Board of Directors

Rita Canning – Chair	Suzie Bassi	Algean Garner	Sherri McElhaney	Gabrielle Saylor
Rebecca Darr - CEO	Joan Bowyer	Cindy Hartwig	Carole Merkel	Lisa Sodeika
Laurie Stone – President	Eileen Brown	Michael Hedrick	Phyllis Molenda	Karen Trzaska
Matthew Baumann – Secretary	Mickey Brown	Richard Hoffman	Suzanne Nance	Deborah Walsh
Jim Lennon – Of Counsel	Madlene Moore-Condon	Jennifer Kyung	Cynthia Rodriguez	Emlen Whipple
Mary Anderson	Maureen Degen	Kathleen Mahne	Ellaine Sambo-Reyther	
Barbara Banks-Pryor				

Leadership Board

Melvin Boldt	Jill Doerner	Sheila King	Paul Pavlus	Jackie Tilton
John Boler	Vinnie Foglia	Jean McCabe	Nancy Robb	Karen Trzaska
Elaine Brettmann	Jay Fritz	Mayor Bill McLeod	Mayor Tom Rooney	Mollie Waller
Anna Brown	Ed Goesel	Margaret McSweeney	John Ropski	Dede Wamberg
Kelley Clancy	John Glassgow	Felicia Middlebrooks	Mayor Jim Schwantz	Rita Canning – Chair
Mayor Rodney Craig	Ken Gorman	Senator Matt Murphy	Bill Shannon	Rebecca Darr – CEO
State Rep. Fred Crespo	Diane Hill	State Rep. Michelle Mussman	Nina Stephenson	Laurie Stone – President
Clark Delanois	Ray Howell	Ken Nelson	Brenda Streicher	Jim Lennon – CoChair

WINGS Staff

Rebecca Darr, CEO	Diana Casas	Maria Gonzalez	Adrienne Lewis	Connie Orsini	Maureen Stabile
Evelyn Alvarez	Terese Channer	Barbara Gonzalez-Labeots	Misa Lopez	Jennifer Pagan	Madeline Stefani
Catherine Ardaiz	Anthony Colonna	Christy Goodin	Jennifer Lopez	Timothy Penchar	Tanya Thomas
Anna Bard	Diane Coverstone	Rene’ Goossens	Beth Lye	Ryane Pihl	Donna Treslo
Megan Bartoszewski	Tara Crawford	Bernita James-Thomas	Anna Mazek-Vann	Rosalina Ragonese	Denise Urban
Robin Bergbreiter	Erick Dahl	Tikiya Johnson-Young	Michelle Mazurek	Dinorah Ramirez	Amy Venard
Karin Bjorkling	Jacqueline Davis-Powell	Denise Kashdan	Donna Riley	Donna McAvoy	La Tonya Walker
Elizabeth Blanco	Deborah Falduto	Nikki Katrodia	Maria Medina	William Ripple	Sally Watts
Joe Boruch	Mary Franzak	Christel Kedzie	Sharon Mickelson	Nicole Rodriguez	David West
April Brayton	Yolanda Frazier	Emily Kenneally	Ewelina Modrzejewska	Becky Roemer	Christine Zelenik
Kathryn Brown	Elizabeth Gardham	Leah Kranz	Beth Moss	Joyce Rohrbacher	
Morgan Brown	Candy Garland	Marci Kresin	Mary Jean Natelson	Irene Rozansky	
Marguerite Burgess	Sabina Gibbs	Michael La Rue	Dara Nicole	Bruna Srb	

Volunteer Honor Roll The following volunteers gave at least 100 hours of service during fiscal year 2014.

Elizanis Acevedo	Debbie Cline	Renee Hane	Barbara Koop	Sandie Mix	Debi Stanton
Jon Acker	Rita Corrigan	Tarah Hearn	Erin Kosrowski	Helen Moffett	Sheri Staten
Doreen Apgar	Peggy Crowly	Katie Henegan	Midge Kroll	Barbara Mueller	Jan Stein
Erica Bane	Phyllis DeFilippo	Debbie Herst	Patty Larson	Cathy Niemet	Teresa Stephen
Barbara Barr	Meghan Dolan	Mary Ann Hetreed	Gloria Littles	Ann Marie Nordby	Cheryl Tack
Elvera Becker	Mary Kay Dougherty	Kathleen Jarems	Sophia Lopez	Maria Nowakowski	Marion Tarsitano
Judy Becker	Denise Edelman	Helen Jerusis	Larry Lorenz	Suzanne Poggio	Deborah Thompson
Mary Bell	Steve Ellis	Marilyn Johansen	Candace Machein	Terri Prociuk	Kathie Tonkovic
Martha Birkhold	Kathryn Endre	Rob Jones	Vidisha Marathe	Eileen Rowland	Lily Voyles
Tomi Brown	Corine Esposito	Lois Kazan	Kay Max	Betty Schaefer	Linda Voyles
Serena Carbone	Pam Flanigan	Christel Kedzie	Aleta McCarthy	Bonnie Sidran-Mollison	Ted Weymouth
Florence Carney	Barbara Franciose	Agrata Kheria	Dianne McFarland	Janet Singer	Bren Zuschlag
Ilene Charak	Roberta Haag	Debra Kinne	Maryann Misevich	Juanita Smith	

Donors

WINGS recognizes the following donors, who gave \$1,000 or more during fiscal year 2014.

ORGANIZATIONS

\$50,000 and above

Allstate Foundation
Napleton Schaumburg Subaru
Verizon Wireless

\$20,000 - \$49,999

Abbvie Inc.
BMO Harris Bank
Boler Company Foundation
Chicago Community Trust
Circle of Service Foundation
Discover Financial Services
Henry Crown and Company
JP Morgan
King Family Foundation
Legge Memorial Fund
May & Stanley Smith Charitable Trust
Motorola, Inc.
Pritzker Family Foundation
Reyes Holdings, LLC
The Bufka Foundation
The Greg and Anna Brown Family Fund
Woodard Furniture

\$10,000 - \$19,999

Abbott Laboratories
Alexian Brothers Health System Foundation
Alexian Brothers Hospital Network
Allstate Giving Campaign
Allstate Insurance Company
Angela & Henry Hofmann Foundation
Astellas USA Foundation
Blue Cross Blue Shield of Illinois
Citigroup
Cynthia L Bischof Memorial Foundation
Dover Corporation
Exelon Corporation
First Bank & Trust
Fred & Jean Allegretti Foundation
Fred J. Brunner Foundation
Insurance Industry Charitable Foundation
Kirkland & Ellis LLP

Madison Dearborn Partners, Inc
Mary Flinn Trust
Northern Trust Company
Northwest Community Hospital
Our Saviour’s Evangelical Lutheran Church
Plansmith Corporation
The Rhoades Foundation
Verizon Hopeline
Village Treasure House

\$5,000 - \$9,999

American Academy of Matrimonial Lawyers Foundation
AMLI Residential
Aon Corporation
Archer Daniels Midland Company
Barrington Area Community Foundation
Capital One Services, LLC
Carol Lavin Bernick Family Foundation
Catamaran Corporation
CDW
George M. Eisenberg Foundation for Charities
HSBC
Illinois Tool Works
J. S. Frank Foundation
M & L Reinheimer Donor Fund
Mary Lou Downs Foundation
McGraw Foundation
McMaster-Carr Supply Co.
McNamara Purcell Foundation
Merrill Lynch
Michael Joseph Foundation
Morgan Stanley
Northwest Community Healthcare
Pentair Process Technologies
Polk Bros. Foundation
Schwarz Supply Source
The Private Bank
TJX Foundation, Inc.
United Way Metro Chicago
Xerox Corporation
Zeman Family Foundation

\$1,000 - \$4,999

AbbVie Inc. Employee Giving Campaign
Advocate Lutheran
Ala Carte Entertainment
Alfredo & Ada Capitanini Foundation
Assurance Agency, Ltd.
AT&T
Automatic Mechanical Services, Inc
Barrington Area United Way
Barrington Junior Women’s Club
BP Foundation, Inc.
Capitanini Foundation
Cars of America, Inc.
Clark Family Foundation
Cline Printing
Cornerstone Bank
Des Plaines Office Equipment
DMI (Dairy Management Inc.)
Dominican Sisters of Springfield
ECOLAB Inc.
Eileen Fisher, Inc. - Retail Division
Emerson Network Power, Energy Systems
Empire Education Group
Estate of Muriel Klinge
Evangelical Lutheran Church in America
Fidelity Charitable Gift Fund
Gignilliat & Hymen
Gorman and Koch
Griffin Pipe Products Co., Inc.
Harper College
Hitachi High Technologies America
Holy Family Parish Community
IBM Employee Services Center
Jocarno Fund
Joseph & Catherine Johnson Family Foundation
Lemont LLC
Lord of Life Lutheran Church
Mary Seat of Wisdom Church
Master Educational
Morris Weiser Family Foundation
Ms. Molly Foundation

Network for Good
North Suburban Association Of Chiefs Of Police
Oakton Community College ECE Club
Odd Fellows
Panasonic Factory Solutions Co.
Park Ridge Community Fund
Power Construction Company, LLC
Presbyterian Women in the Presbytery of Chicago
Public Health Institute of Metropolitan Chicago
Rapid Printing Arts
Robert R. McCormick Foundation
Rose F. & Alice M. Koffend Foundation
Rotary Club of Rolling Meadows
Schaumburg Township District Library
Segal Foundation
Simply Storage Management, LLC
Soft Surroundings
St. Edna Parish
St. Michael’s Episcopal Church
Staples Foundation
Synegen, Inc.
The Gap Foundation - Cybergrants, Inc.
The Service Club of Chicago
Thompson Coburn LLP
Trinity United Methodist Church
United Methodist Women of Arlington Heights
Wells Fargo Community Support Campaign
Witron Integrated Logistics, Inc.
Women’s Club of Inverness
WT-Engineering
Xentris

Donor list continued on following page.



Donors (continued)

INDIVIDUALS

Leadership Circle (\$100,000-\$999,999 in FY2014)

Vincent & Pat Foglia
Ed & Jean McCabe

Chairman's Circle (\$10,000-\$99,999 in FY2014)

Christopher & Anna Bilton
Stuart & Bette Bilton
Greg & Anna Brown
John & Kathleen Buck
John & Rita Canning
Benjamin & Cynthia Chereskin
Michael & Elizabeth Cole
Lester & Renee Crown
Vahe & Hasmik Dombalagian
Craig & Janet Duchossois
Michael & Jacky Ferro
Ron & Christine Gidwitz
David & Carol Golder
Douglas & Ann Grissom
Marguerite D. Hark
David Herro & Jay Franke
Robert & Debbie Herst
Diane Hill
Raymond & Marilyn Howell
Anthony & Sue Hunter

Bryant L. Keil
Bernard Labovitch
James & Martha Lennon
Wesley & Lynn Little
Melissa & Ward McNally
Matthew & Meghan Norton
Richard & Peggy Notebaert
James & Ellen O'Connor
Anne Pramaggiore
Thomas & Cece Ricketts
John & Sue Ropski
John & Jeanne Rowe
Timothy & Maria Shideler
Thomas & Cia Souleles
T.A.N. Golf Outing
Glenn & Jackie Tilton
Randi & Ed Trojan
Farhan Yasin

President's Circle (\$1,000-\$9,999 in FY2014)

Bonnie Albrecht
Roger & Suzie Bassi
Matt & Dawn Baumann
Todd & Michelle Bergeron
Norma Bock
Melvin & Rose Boldt
Bill & Joan Bowyer
Jason & Bethanne Carey
Christopher & Terri Channer

Kelley Clancy
Tom & Roberta Clinger
Homer & Lisa Coffman
Martin Craig
Galen & Mary Crull
John & Kathryn Cushing
Joe & Rebecca Darr
Kent & Elizabeth Dauten
Dan & Kirsten Douglass
Greg Dowell
John & Fran Edwardson
William & Andrea Ferguson
Frank & Christine Fiarito
Gerald & Denise Fitzgerald
Jeffrey & Michelle Foland
James Frank
John & Carol Froman
Tom Gallagher
Kim Gantz
Scott Gaughan
Patrick & Sue Geegan
James Gordan
Kenneth & Margaret Gorman
Peter & April Graves
Michael P. Gwilliam
Bill & Roberta Haag
Marguerite Hawk
Sharon Kulak
Madeline McCarren
Sherri McElhaney
Andy & Joanie McKenna

David & Margaret McSweeney
Max C. Mielecki
Melinda Montijo
Joan Naughton
Larry & Margaret Newsom
Kenneth & Carla Parch
Thomas Richards
Glen & Mary Roberts
William & Susan Rogers
Michael & Deborah Rohrwasser
Scott Santi
Gordan & Carole Segal
Jason & Maria Shideler
Mark & Michelle Shockley
A.J. Singh & Dimple Tejani
Anna M. Sisto
Robert & Nina Stephenson
Richard Strup
Collette Taylor
Mark Thierer
Michael & Patricia Thorsen
Judith Torrez & William Jewell
Karen Trzaska
Matt Udoni
Mollie Waller
Dede Wamberg
Dave & Gloria Wicklund
Patricia Woertz
Dale & Tina Wonders
Drs. C. & A. Yeshwant

WINGS also wishes to thank these donors of goods, services and facilities.

Jon Acker
Ron Ackerman
John Blackburn
Pamela Litz-Blevons
George Bourkas
Cline Printing
Colliers International
Daily Herald
Four Seasons Hotel
Green with Envy Landscaping
Jenner & Block
Jerry Grotthuss
Landscapes

Larry Lorenz
George Lossman
Lutheran Church of Martha & Mary
John Marecki
Michael Joseph Foundation
Molly Maid
Panasonic
William Pflaumer
Printing Arts
Diana Schickel
John & Patricia Scotellaro
SPLASH
United Airlines

WINGS appreciates the support that it receives from each and every donor. If we have omitted or incorrectly spelled your name or organization please accept our apologies.

CREDITS

Page and content design by Terri Channer and Anna Bard.

The design template for this annual report was created by pro bono consultants from the Taproot Foundation.