

WINGS was honored
to be featured on the
Wintrust Building along the
Kennedy Expressway!



WINGS

ANNUAL REPORT 2021



Emancipated Woman

She fears God

She keeps a cash flow

She pays her own way

She is educated

She gives

She saves and invests

She is in control of her emotions

She is beautiful

She is optimistic

She has eagle eyes

She is courageous

She minimizes flaws

She accentuates the best

She is skeptical

She is independent

She is secure

She is humble

She is thankful

She is weightless

She is reliable

She is right on time

She is love

She is a work in progress

She is free!

Diana*, WINGS Client

When asked if we could share the poem, Diana said, *"Sometimes we have to share our wounds to help others heal."*

A MESSAGE FROM PRESIDENT AND CEO



Dear WINGS Family,

In the year and a half since the pandemic began, the world has been through so much and the incidence of domestic violence has continued to rise. In Chicago, the number of domestic homicides tripled and the number of text messages for help to the statewide hotline rose over 2,700%! The pandemic was not just a matter of safety from the virus, but also a matter of life or death for many. Worst of all, the children were firsthand witnesses to more violence than ever.

WINGS needed to step up to do more. We couldn't just survive the pandemic, we needed to thrive.

And, thrive we did!

Thanks to a dedicated team of staff, phenomenal Board of Directors, caring Leadership and Associates Councils, supportive volunteers; and of course, amazing donors, WINGS experienced huge growth over the last year.

105 new units of housing for survivors moving out of all of the Chicago shelters

Expansion of emergency shelter into hotel rooms to serve more families and larger families

**Expansion of mentoring programs with the launch
of the Survivor Lifeline Mentoring Pilot Project**

Expansion of our Arlington Heights Resale Store

Expansion of our Board of Directors and Councils

**Expansion of our Children & Family Services with specialized
training for the Children's Advocates**

And, the list goes on...

Thanks to every one of you who have given time, talent or treasure to make all of this possible. WINGS is blessed to have all of you!

Sincerely,

Rebecca A. Darr,
President & CEO



HOUSING

Emergency Safe Houses

2 Safe Houses,
One in Chicago
One in the suburbs

Emergency
Hotel Placement:
45 adults and 75 children

Transitional Housing, Chicago and Suburbs

3 Shared Living Homes
25 Independent
Apartments
3 Extended Stay Units

Permanent Housing

8 Apartments
2 Homes
110 Rapid Rehousing Units

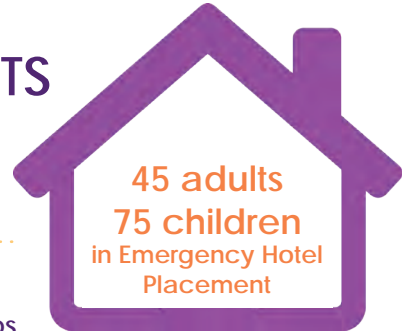
WINGS IMPACT



756 TOTAL CLIENTS SERVED

402 Adults empowered to break free from domestic violence

354 Children encouraged to develop positive, non-violent relationships



45 adults
75 children
in Emergency Hotel Placement

984,095

Cumulative Nights of Shelter since 1985

64,986

Safe nights of shelter for adults and their children this year

1,936

Number of nights in All Chicago Rapid Re-Housing Program



6,229

Hours of children's services provided to develop life skills and healthy relationships

3,220

Hours of adult counseling and mentoring services helped build self-esteem and heal from trauma

80

Adults given access to counseling and mentoring through **Community Based Services**

112

Hospital bedside visits

411

Medical professionals trained to identify domestic violence and provide referrals



WINGS Resale Stores generated

\$2,099,136

in sales



\$979,792

Raised at WINGS Events funded housing and services for clients

\$21,935

In WINGS Resale Store gift cards provided clothes, housewares and furnishings for families

NEW INITIATIVES

Expansion During a Pandemic

4

The pandemic did nothing to stop WINGS from growing!

To maintain social distancing in the Safe Houses, staff were forced to reduce the number of people within the Suburban Safe House. At the same time, there was an increase in calls for families needing emergency shelter. WINGS secured a grant to place families in hotel rooms.

WINGS also secured new funding to expand housing options. This funding called Rapid Rehousing allowed staff to move families from shelter into their own apartments more quickly. In partnership with two other agencies, WINGS secured funding for 105 units of Rapid Rehousing in the Chicago region.

With this new funding, WINGS was able to establish a new partnership with St. John Church to house larger families such as moms with five or six kids, which is a huge need. The Transportation Team, led by Chief Operating Officer, David Kahan, was very busy delivering furniture and household items to all of the new families moving into their new homes.



WINGS secured a grant to place families in hotel rooms.



Transportation Team delivering furniture and household items to WINGS families.



Survivor Lifeline Pilot Program Launch

5

For over 20 years, WINGS has been providing mentoring for graduates and for Latina women. During that time, more and more WINGS graduates have come forward to serve as those mentors. As a result, we decided to launch a new mentoring program where survivors of domestic violence are matched with other survivors to provide mentoring and emotional support. WINGS received the initial funding from the Cindy Bischof Memorial Fund to officially launch the Survivor Lifeline mentoring pilot program. Significant additional funding was provided by BMO and the Adtalem Education Group.

Cynthia L. Bischof was a successful 43-year old commercial real estate broker. After breaking up from a relationship she had been in for several years, her ex-boyfriend stalked her for more than nine months before ultimately taking her life on March 7, 2008. To safeguard herself from the perpetrator, Cindy spent many court appearances lobbying for the judge to require the offender to wear a GPS monitoring bracelet for an added layer of safety. The judge stated it was not within his capability to offer this type of safety tool. After Cindy's death, her family and friends lobbied to get legislation passed to allow judges to order the use of GPS monitoring bracelets. Since that time, 22 states have passed this legislation.

The Survivor Lifeline mentoring pilot program is another one of Cindy's legacies. We are truly grateful for the additional funding from BMO and Adtalem Global Education. This program will ensure that survivors who are leaving shelters can have access to a long-term mentor who has a similar lived experience.

WINGS is supported by many of Chicago's most influential citizens and philanthropists

BOARD OF DIRECTORS

Rebecca Darr, President/CEO

Rita Canning, Chair Emeritus

Ellaine A. Sambo-Reyther, Co-Chair

Matthew Baumann, Immediate Past President

Nate Solomon, Secretary

Bill Shannon, Treasurer

Sunitha Chamarti, VP Strategy

Dr. Algean Garner, VP Program

Ken Gorman, VP Operations

Debby Jackson, VP Board Development

John Sciacotta, Of Counsel

Elizabeth Tenner, VP Philanthropy

Mary Toomey, VP Personnel through Nov 2020

Jane Marcus, VP Personnel beginning Dec 2020

Victoria Watkins, VP Advocacy

Terence Banich

Janet Boyle

Renee Ford

April Graves

Karen Gray-Krehbiel

Terri Greeno

Harmony Harrington

Kelly Henry

Sandra Hirsch

Don Houchins

Rebeca Huffman

Niyaz Kamookagath

Dr. Mia Layne

Carol Lundahl

Honorary Kristal Rivers

Trish Rooney

Amy Rule

Michael Sicher

Lisa Sodeika

Darla Swango

Jackie Tilton

Debra Vander Weit

Yolande Wilson-Stubbs

6

HONORARY LEADERSHIP COUNCIL

Greg and Anna Brown

John and Rita Canning

Michael and Elizabeth Cole

Kent and Liz Dauten

Merri Dee

Craig and Janet Duchossois

Rahm Emanuel and Amy Rule

Michael and Jacky Ferro

Vince and Pat Foglia

Ron and Christina Gidwitz

Doug and Ann Grissom

Francia Harrington

Michael Harrington and Anne Pramaggiore

David Herro and Jay Franke

Jack and Marty Higgins

John Krehbiel and Karen Gray-Krehbiel

Felicia Middlebrooks

Richard and Peggy Notebaert

Jim and Ellen O'Connor

Larry and Corky Richman

Glenn and Jackie Tilton

Monsignor Ken Velo

David and Marilyn Vitale

BOARD GROWTH

During the year, WINGS was happy to welcome new Board members.

All of these Board members were recommended by other Board members and Leadership Council members. They were interviewed and oriented over Zoom, the new normal during COVID-19.

NEW BOARD MEMBERS

Janet Boyle

Niyaz Kamookagath

Kelly Henry

Dr. Mia Layne

Rebeca Huffman

Michael Sicher

Carol Lundahl

Harmony Harrington

The legacy of a WINGS Board member was realized during this year.

Marie Gebbie Kemper was a Board member in the late 1990s and early 2000s. She was the widowed mother of five children and started her own company called Action Bag. She retired from the Board, but continued to support WINGS over the years. In July 2020, Marie passed away and left WINGS in her estate. WINGS received a gift from Marie of \$340,000, and we are eternally grateful.



Suburban Safe House dining area dedicated to Marie Gebbie Kemper

MAJOR CORPORATE DONORS



WINGS is truly grateful to BMO for all of the support they have provided for over 25 years. As a financial institution, BMO has provided more funding to WINGS than any other similar institution. During that same timeframe, BMO has been represented on the Board of Directors and Leadership Councils. Today, Jim Duff, Senior Vice-President and Head, Business Banking Credit Risk, and Meeta Yadava, Managing Director at BMO Family Office, serve on the Metro and Suburban Leadership Councils.



WINGS is honored to have Ellaine Sambo-Reyther as the Board Chair for WINGS. She is the Director, Private Wealth Advisor at BMO Wealth Management and is a dedicated community leader.



Left to right: Matthew Baumann, Rebecca Darr, George McCaskey, and Rashied Davis

WINGS is honored to receive the support of the Chicago Bears Football Club.

In 2014, the Chicago Bears provided a grant to fund the playground at WINGS Metro Safe House. Without their support, there would be no place for the children at Metro to have a safe place to play. Since then, the Bears organization has provided much-needed operational support each year. The staff and individual players have volunteered since 2014, and support comes from every level of the organization.

When it comes to stepping up to make a difference, the Chicago Bears are doing their part. They are directly impacting the lives of children who experienced domestic violence, helping them to heal from trauma and live happy, healthy lives.



On a cold day in February 2016, WINGS Metro Safe House opened its doors. The goal of the new shelter was to provide a safe and secure environment for families escaping domestic violence. When it opened, WINGS Metro became the first new domestic violence Safe House in Chicago to be opened in over a decade.

In 2021, a virtual celebration brought everyone, who was responsible, back together to honor

WINGS Metro 5-Year Anniversary!!

Mayor Rahm Emanuel, Bears owner, George McCaskey, and John and Rita Canning, Board Chair, were among the dignitaries who reflected on the impact of this beautiful facility. Mayor Emanuel is the reason WINGS Metro was born, and he and his wife, Amy, continue to support us today.

[view event here](#)



Since its opening,
WINGS Metro has

provided

74,792

nights of critical
emergency
shelter

helped

887

domestic violence
survivors, including
458 children

9

SPECIAL THANKS

A special thanks to WINGS Board members, Amy Rule and Rahm Emanuel, Jackie and Glenn Tilton, and John Krehbiel and Karen Z. Gray-Krehbiel, for their anniversary gifts of \$25,000!!

VIRTUAL EVENTS

PURPLE TIE BALL

Co-chairing for the second year, Melissa Canning and Debby Jackson, as well as an outstanding host committee, led our first-ever virtual Purple Tie Ball to great success! And because of the generosity and support from our sponsors and donors, we exceeded our fundraising goals. The event was different, but so much fun. The event was emceed by Dana Kozlov, reporter for CBS 2 Chicago News. Guests enjoyed an elegant dinner delivered right to their doorstep and powerful stories from a board member and two graduates.

To view the stories please click the QR code



Mike and Melissa Canning celebrating the event from home, PTB 2020



Special gala bags delivered to event guests, PTB 2020



Event Co-Chair, Debby Jackson, enjoying dinner with guests, PTB 2020

SWEET HOME CHICAGO

Bittersweet is how we would like to describe our 2020 Sweet Home Chicago. We are grateful to all of our sponsors and donors who supported the event. The sad part was losing a dear friend, Rich Martin, from COVID-19 complications. Rich lead the Comfort Dog Ministry at Lutheran Church Charities and has attended the event with his wife, Dona, since 2014. With the help of Ralph's World, we were able to honor Rich with a special video tribute. Because of the virtual format, we were able to start a new tradition this year of delivering gingerbread house decorating kits to anyone who made a \$100 donation or higher.



From left to right, Rich and Dona Martin with Rita and John Canning, SHC 2016



Carter decorating gingerbread house from home, SHC 2020

11



From top left to right, Algean Garner, Raquel Cheers, Rebecca Darr, Dorian Hunter

IN YOUR KITCHEN

A delicious evening was enjoyed by those who participated in our first-ever virtual cooking class! The event allowed us to celebrate the new kitchen upgrades at our WINGS Metro Safe House. Chef Dorian Hunter, MasterChef Season 10 Winner, led the class from her home in Georgia. Board member, Dr. Algean Garner, served as sous chef to our awesome chef at Metro, Raquel Cheers. Margaret McSweeney co-chaired the event and served as our event moderator. We are grateful to our sponsors and; especially. Studio B for producing the event.



Completed dinner photos submitted by participants

BUTTERFLY CLUB

Born and raised in Germany, Al still remembers the lady in his apartment building, who frequently had black eyes. Although it wasn't talked about, everyone in the building knew she was abused by her husband. Never forgetting her, Al knew those experiencing domestic violence needed a safe place.

In 2006 while attending a community event, Al picked up a brochure about WINGS. Never thinking past the short-term need for a safe place, Al was impressed to learn that WINGS provided long-term services such as job training too. Al and his wife, Tina, began donating financially to WINGS. In addition, they gave items to the WINGS Resale Stores, liking how clients had access to the donated items, if needed.

This year, Al and Tina joined the WINGS Butterfly Club. Al said, *"We realized it was more helpful for WINGS to receive smaller consistent support each month, rather than larger gifts once a year. Small adds up, and it doesn't seem so big a sacrifice as it did when we donated all at once. Plus, it is easier to budget for both WINGS and us, and doesn't hold up the donation due to procrastination."*

Just as a caterpillar transforms into a butterfly, YOU can help a client transform from a life of violence to one of freedom!



Rebecca Darr with Alfons (Al) and Tina Boshenz

WINGS Butterfly Club is a great way to turn your annual giving into sustainable giving. Currently, there are 65 members giving monthly gifts ranging from \$5 to \$350.



Learn more and join



ACTS OF KINDNESS



VOLUNTEERS

1,789 volunteers contributed through various skills and talents

45,180 volunteer hours supported WINGS daily operations

\$1,326,929 is the valuation of volunteer hours that saved WINGS on overhead expenses

"Considering the unexpected year, I couldn't be more proud and thankful to all the volunteers who stepped up and helped when WINGS needed it the most. Our volunteers are the best people you can meet; their passion and dedication to end domestic violence is really inspiring and contagious."

- Bruna, WINGS Manager of Volunteer Services

IN-KIND DONATIONS

\$179,000 worth of product donated

\$177,000 worth of product given to clients

206 children received backpacks and gym shoes

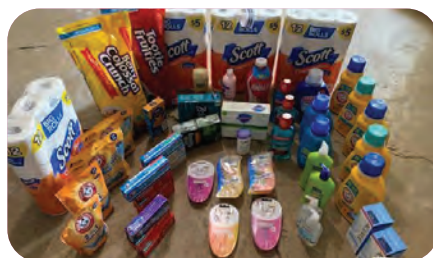
496 coats and winter items were collected and given to clients

182 children received Easter baskets

2,128 gifts were donated for the Holiday Store

166 moms received Mother's Day gifts

1,000 masks were sewn and donated by two volunteers for all WINGS clients



"The children become so excited when they see the holiday decorations. Families are once again able to celebrate a holiday they may have abandoned due to limited resources or having to leave everything behind. Moms once again are able to share holidays with their children and no longer have to pretend that it is just 'another day.' These items give families hope and a reason to celebrate again." - WINGS Staff



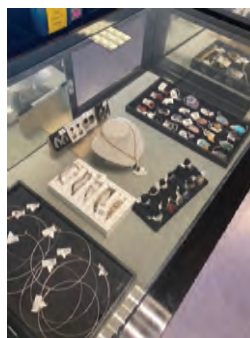
WINGS RESALE

While the COVID-19 pandemic continued to require flexibility from the WINGS Resale Stores, donations didn't stop coming in from generous donors. Over 100,000 pounds of clothing donations and 50,000 pounds of accessories and household goods were donated each month. In addition, over 2,000 pieces of donated furniture were sold in the stores throughout the year.

A highlight of 2021 was the expansion of the WINGS Arlington Heights Resale Store. WINGS was able to secure adjacent retail space, previously held by another tenant, increasing the store's size from 6,000SF to 12,000SF. The new space, which opened to the public on May 1, 2021, features beautiful furniture, home décor, and housewares.

Profits generated by our stores go back into WINGS Programs. Donated merchandise is also used to meet the needs of our clients. Throughout the year, several clients came into the Safe Houses needing clothing, which was supplied in-kind by the stores. In addition, clients moving into transitional housing were given WINGS Resale gift cards to use for purchasing furniture, home décor, and housewares for their new homes.

Thanks to all donors, customers, volunteers, and staff
that support our stores!



The new Arlington Heights Resale Store space offers a large selection of clothing, jewelry, furniture, home décor, and housewares.



Store
locations
& hours

FINANCIALS

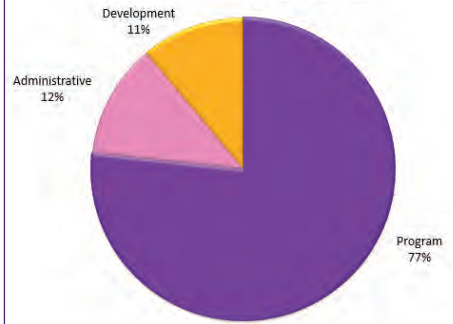
Consolidated Statement of Activities for the Year Ended June 30, 2021

	2021	2020*
Revenues (unrestricted)		
Contributions (cash and in-kind)	2,400,282	3,153,451
Special Events (net of direct costs)	929,792	1,490,002
Resale Income (net of direct expenses)	501,057	431,942
Government Contracts	2,810,251	2,867,380
Other	1,840,744	326,255
Total Revenue	\$ 8,482,126	\$ 8,269,030
Expenses		
Program		
Safe House	1,537,983	1,448,562
Safe House at WINGS Metro	1,989,566	1,928,733
Transitional Living	1,589,331	1,642,669
Community Based Services	434,857	390,181
Permanent Supportive Housing	399,571	291,182
Administrative	948,857	916,447
Development	857,966	880,148
Total Expenses	\$ 7,758,131	\$ 7,497,921
Surplus (deficit)	\$ 723,995	\$ 771,109

Consolidated Statement of Financial Position as of June 30, 2021

	2021	2020*
Assets		
Current Assets	4,195,522	3,820,597
Fixed Assets	12,874,020	13,308,714
Other Assets (endowment investments, new market tax credit loan)	9,017,997	8,253,851
Total Assets	\$ 26,087,539	\$ 25,383,162
Liabilities & Net Assets		
Liabilities		
Current Liabilities	2,688,319	925,553
Long-Term Liabilities	7,034,663	9,796,893
Total Liabilities	\$ 9,722,982	\$ 10,722,446
Net Assets		
Net Assets without Donor Restrictions		
Undesignated	7,869,191	7,468,563
Board Designated Reserve	750,797	421,468
Non-Controlling Interest	(16,678)	(10,716)
Net Assets with Donor Restrictions	7,761,247	6,781,401
Total Net Assets	\$ 16,364,557	\$ 14,660,716
Total Liabilities & Net Assets	\$ 26,087,539	\$ 25,383,162

FY21 Consolidated Expense Allocation



WINGS financial statements were audited by Plante & Moran, PLLC.

Consolidation includes WINGS Program, Inc. and WINGS Metro LLC entities.

*2020 has been restated to reflect a change in accounting for donor restricted net assets.

WAYS TO **HELP** WINGS

ATTEND OUR EVENTS

Learn more about what WINGS is doing and help advance our work through sponsorship, ticket purchases, and auction/raffle donations.

BECOME A FINANCIAL SUPPORTER

WINGS welcomes financial donations from individuals and organizations, all of which help to support the important work we do.

VOLUNTEER

Volunteers play an important role in supporting our programs.

IN-KIND PROGRAM DONATIONS

In-kind donations such as cleaning and hygiene products meet the basic needs of our clients, while holiday gifts bring joy.

DONATE TO THE RESALE STORES

Donate gently used clothing, housewares, accessories, and furniture to stock our resale stores which generate income for our programs and services, while providing for client needs. If you like to host parties, we've developed Things4WINGS just for you. It is a fun way to involve your friends and family in a donation drive.

**CONTACT
WINGS**



847-519-7820

wings@wingsprogram.com

www.wingsprogram.com

WINGS STORIES

Testimonials from Clients and Staff

"I am a survivor of domestic abuse. If it weren't for the assistance provided to me by WINGS, I doubt my children and I would be where we are today... safe, empowered, and on a path to long-lasting healing.

While this past year and a half has been one of tremendous tumult and trepidation, it was also one of incredible positive change, healing, and courage... all begun from my experience with WINGS."

– WINGS Hospital Client



"I will forever be grateful to the WINGS Program. It truly saved my family."

– WINGS Client

"I am humbled that our clients allow us to join them along their journey to living abuse-free lives."

– Megan, WINGS Supervisor of Clinical Services



"A client, who just moved in today, shared this is the second time in eight years she has left her husband and feels alone. She said she minimized her abuse because she wasn't sure what domestic violence actually was. She began to cry when I told her I believed her, saying, 'I didn't think my abuse was enough to seek help.' I told her, 'You have endured more than enough and definitely can utilize WINGS services.'"

– Iris, Manager of WINGS Safe House Services



Mission

The mission of WINGS Program, Inc. is to provide housing, integrated services, education and advocacy to end domestic violence.

Vision

WINGS Program, Inc. will help create a society in which every domestic violence survivor has a voice and the resources to break the cycle of domestic violence.

Leadership Team

Rebecca Darr,
President/Chief Executive Officer

Denise Urban,
Executive Vice President/
Chief Financial Officer

David Kahan,
Chief Operating Officer

La Tonya Walker,
Chief Program Officer

Sylvia M. Zaldivar,
Chief Development Officer

WINGS Program, Inc.

P.O. Box 29309
Chicago, IL 60629

P.O. Box 95615
Palatine, IL 60095

Phone: 847-519-7820

24-Hour Crisis Line: 847-221-5680

www.wingsprogram.com

